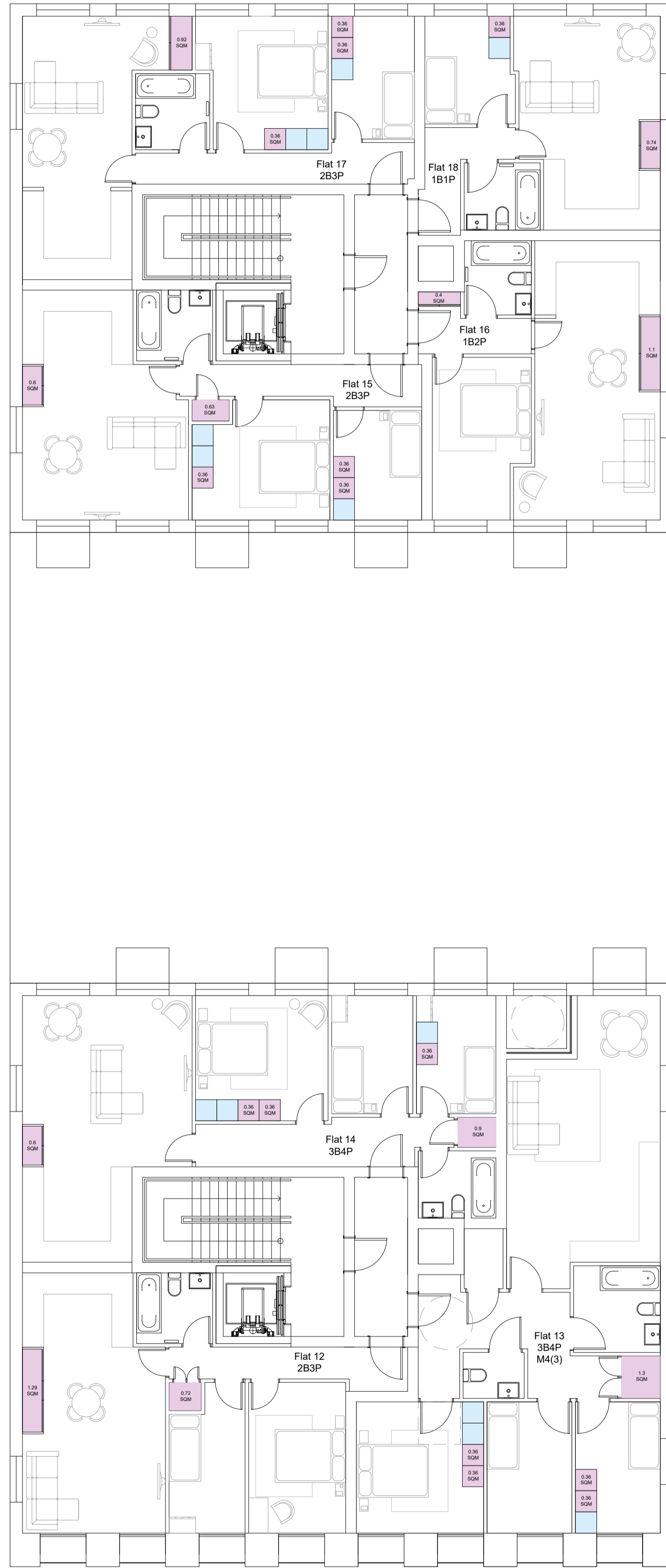


Proposed Second Floor Plan 1:100  
0 1 2 3 4 5



Proposed Third Floor Plan 1:100  
0 1 2 3 4 5

AREA SCHEDULE

FLAT	TYPE	AREA
01	1B2P	52m <sup>2</sup>
02	1B2P	57m <sup>2</sup>
03	2B3P	61m <sup>2</sup>
04	1B2P	50m <sup>2</sup>
05	2B3P	61m <sup>2</sup>
06	3B4P	92m <sup>2</sup>
07	3B4P	76m <sup>2</sup>
08	2B3P	61m <sup>2</sup>
09	1B2P	50m <sup>2</sup>
10	2B3P	61m <sup>2</sup>
11	1B1P	40m <sup>2</sup>
12	2B3P	61m <sup>2</sup>
13	3B4P	92m <sup>2</sup>
14	3B4P	76m <sup>2</sup>
15	2B3P	61m <sup>2</sup>
16	1B2P	50m <sup>2</sup>
17	2B3P	61m <sup>2</sup>
18	1B1P	40m <sup>2</sup>
19	2B3P	61m <sup>2</sup>
20	2B3P	63m <sup>2</sup>
21	2B3P	61m <sup>2</sup>
22	1B1P	43m <sup>2</sup>

Notes:

C	Internal Storage	DS	10/10/2023
B	Planning Updates	DS	24/05/2023
A	Amended area schedule	DS	13/12/2022
-	Production of drawings	-	-

Rev	Comment	By	Date
-----	---------	----	------

Stage:  
PLANNING

Client:  
PRIVATE

Project:  
EMPIRE THEATRE  
22 ALEXANDRA ST  
SOUTHEND ON SEA  
SS1 1BU  
---

Drawing Title:  
PROPOSED PLANS - 2-3

Drawing no:  
262-P103

Revision: C Drawn by: DS

Project no: 262-10-14 Chkd by: SK

Scale: 1:100 @A1

**SKARCHITECTS**  
833-855 London Road  
Westoff-on-Sea  
SS0 9SZ  
Tel: 01702 509250  
Email: info@skarchitects.co.uk

Do not quote from this drawing.  
Drawing to be kept in conjunction with all other issued drawings, documents and relevant consultants' information.  
All information on this drawing is for guidance purposes only. All dimensions must be checked on site.  
This information is subject to Building Control requirements and the requirements of all relevant statutory authorities and service providers.  
© SKARCHITECTS Ltd 2022